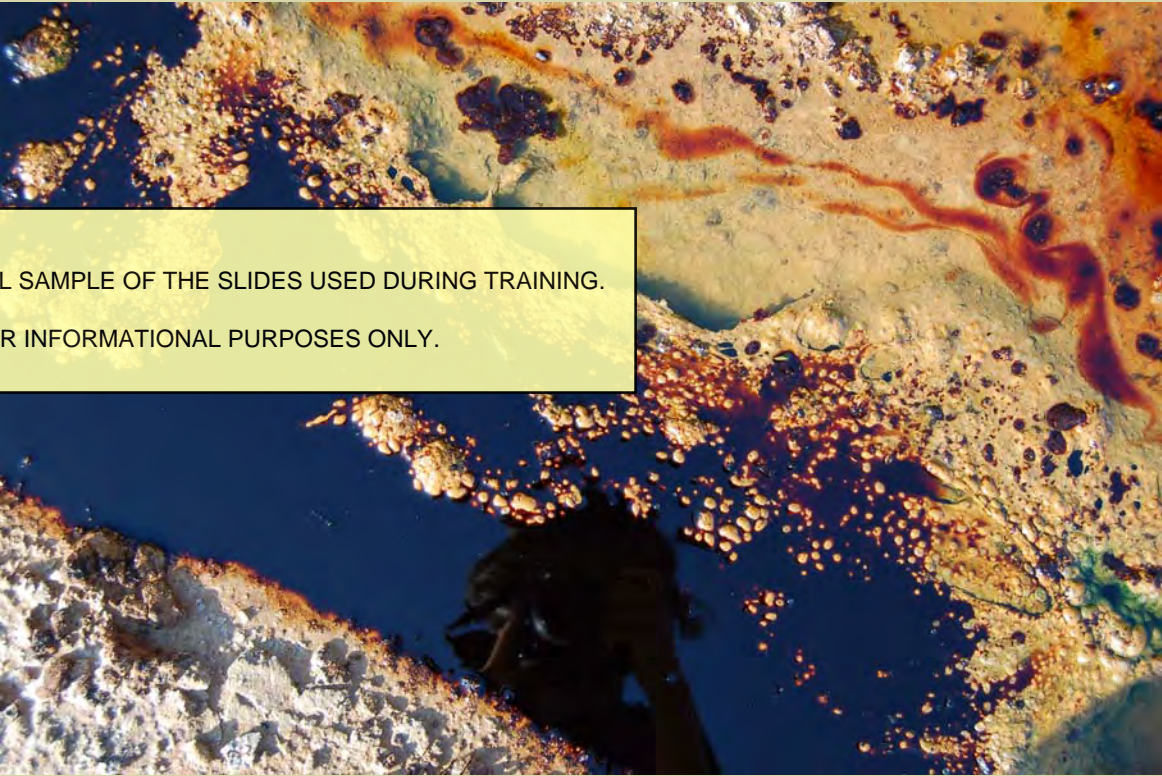


Annual Environmental Training: *Water Programs*

- 1. SPCC*
- 2. Storm Water*
- 3. Implementation*



THIS IS A SMALL SAMPLE OF THE SLIDES USED DURING TRAINING.
FOR INFORMATIONAL PURPOSES ONLY.

Steele Environmental Services, LLC

16516 El Camino Real #101, Houston, TX 77062

281-300-2174 * 281-218-9750 FAX

www.EnviroSteele.com

THIS COURSE

- **General**: for many industrial types
- **Accessible**: to employees with different backgrounds.
- **Reference**: useful perspective (we hope).
- **“Info-tainment”**:
You will not sleep.
☺



MATERIALS USED, THIS COURSE

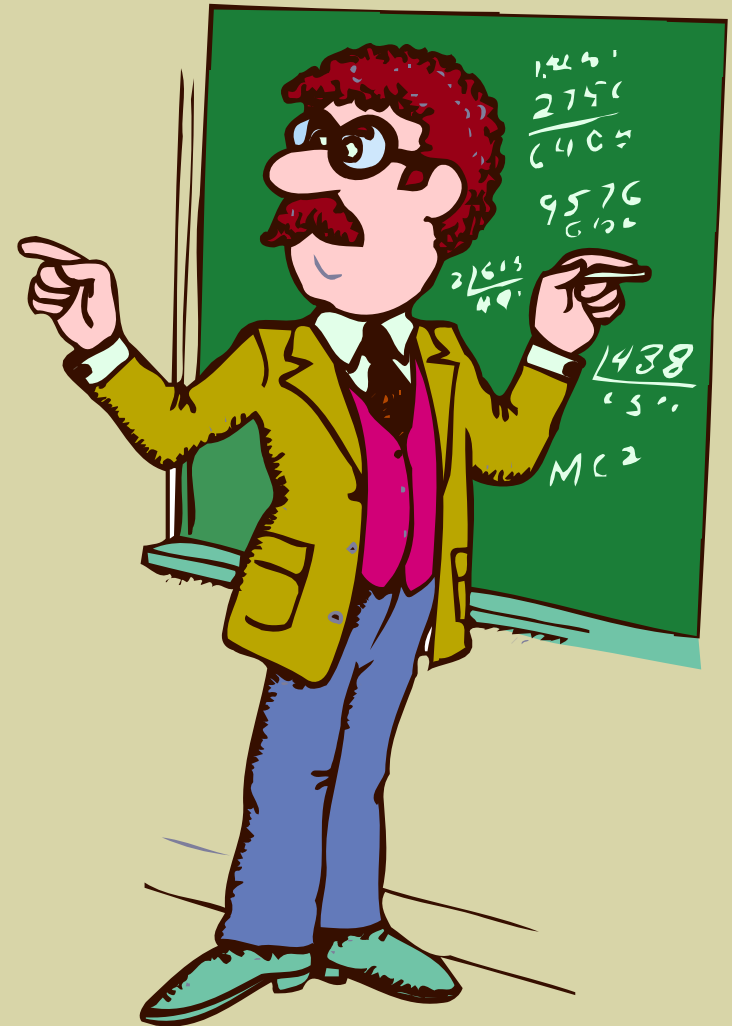
1. Public Domain. No copyright or intellectual property infringements. Photos by instructor unless credited.

2. Privacy Protected. Identifying marks removed from photos of client sites (some digitally altered).



EMPLOYEE TRAINING

- **Both Rules Require It.**
 - Understand the requirements.
 - Review work practices.
 - Understand systems so you can inspect & document.
 - Emergency preparedness.
- **Training When?**
 - “At least once a year”



SPCC Training

*Spill Prevention,
Control &
Countermeasure
Rule*



Steele Environmental Services, LLC

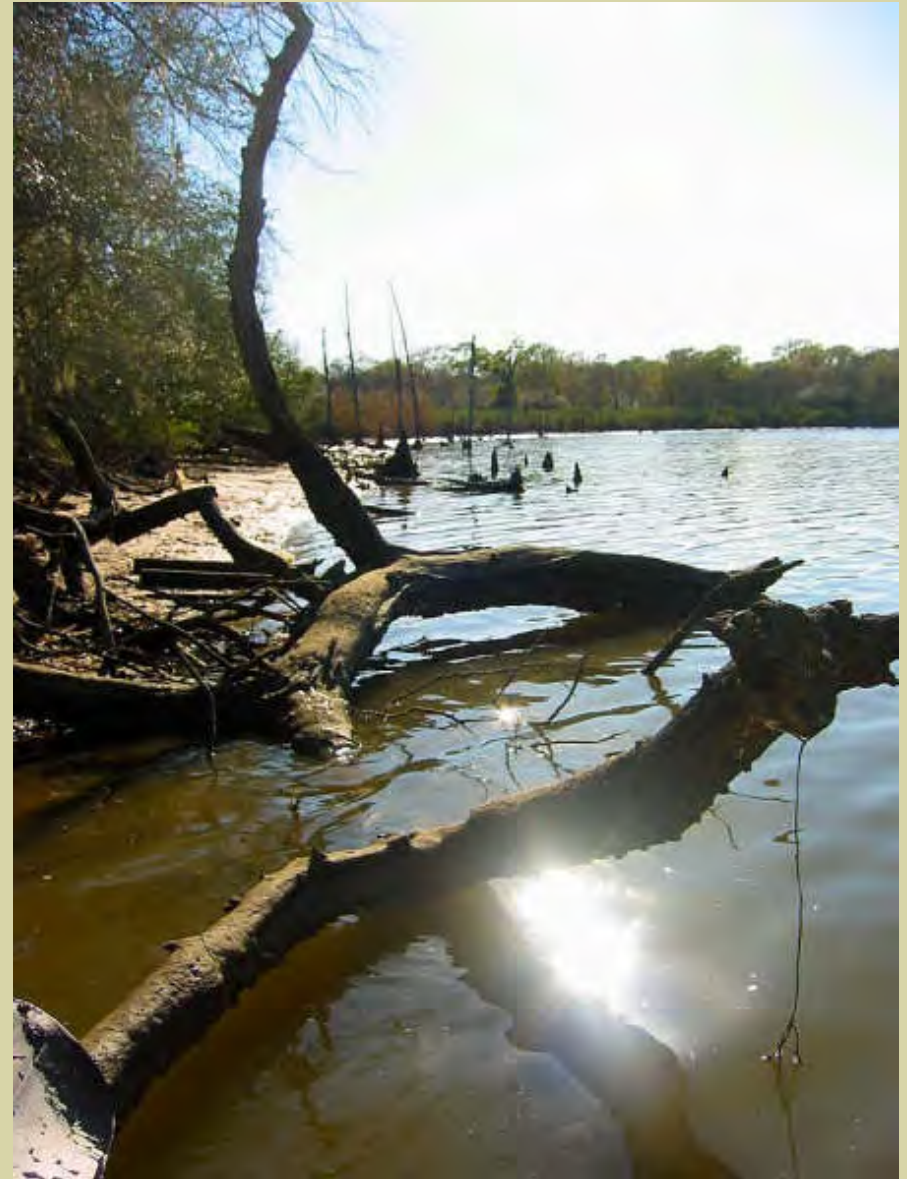
16516 El Camino Real #101, Houston, TX 77062

281-300-2174 * 281-218-9750 FAX

www.EnviroSteele.com

OUTLINE

- ❑ **What is “SPCC”?**
- ❑ **Step-by-Step Compliance**
 - **Engineering.**
 - **Your SPCC Plan (walk-through).**
 - **Emergency Response.**



ENGINEERING



Ashland oil tank collapse, January 2, 1988.

http://photos.orr.noaa.gov/gallery_4/incidents-7.htm

- **4 million gallon spill**
- **500,000 gallons into the Monongahela River.**

ann	SPCC Plan	Environmental Management System: CORPORATE - WATER - SPCC
REVISION:	REVISION DETAIL:	PAGE:
June 2006	This "Master" plan with the assistance of www.EnviroSteele.com	28 of 55

Year:

ANNUAL REVIEW CHECKLIST SPCC or STORM WATER or BOTH (circle)

- 2006
- 2007
- 2008
- 2009
- 2010

INSPECTOR NAME & SIGNATURE	
SUPERVISOR NAME & SIGNATURE	

SPCC:

#	YES	NO	Issue
1			Was the master copy of the SPCC Plan easily located and complete?
2			REVISION DATE on the EMERGENCY NOTIFICATIONS list match that posted in the Facility?
3			Were FILES that store paperwork easily located?
4			Were staff TRAINING records found for the 12 months preceding this review?
5			Is the FACILITY TANK SYSTEM still the same?
6			Were all MONTHLY TANK INSPECTIONS completed?
7			Were all MONTHLY SECONDARY CONTAINMENT INSPECTIONS completed?
8			Was the Facility free of REPORTABLE SPILLS within the past 12 months?
9			If # 8 is NO, was a FILE created and written SUMMARY included in the SPCC?
10			Did a review of the CORRESPONDENCE confirm that all issues have been resolved?
11			Were all operational changes to the Facility DOCUMENTED in the Plan or in files?
12			Have all RESOURCE UPDATES and FACILITY CHANGES been made in the Plan?

SWPPP – APPLICABLE (check one):

- YES (complete section below)
- NO (skip section below)

#	YES	NO	Issue
13			Was the Master copy of the SWPPP easily located and complete?
14			Were QUARTERLY VISUAL MONITORING tasks done and forms completed?
15			Were NUMERICAL EFFLUENT LIMITATION (NEL) sample(s) taken?
16			Were all NEL results within permit limits?
17			Were NEL DISCHARGE MONITORING REPORTS filled out and mailed to the TCEQ?
18			Were BENCHMARK samples taken?
19			Were BENCHMARK MONITORING REPORTS filled out and mailed to the TCEQ?
20			Were all UPDATES made to the SWPPP?

- All "NO" answers need to be itemized on the "RECORD OF PLAN REVIEW / CORRECTIVE ACTION" form (follows this page, or facility-specific format can be used).

Annual Review – best format prompts you.

Followed by specific recommendations (next page).

Industrial Storm Water Training

- *Texas Multi-Sector General Permit (MSGP) TXR050000, and others.*



Steele Environmental Services, LLC

16516 El Camino Real #101, Houston, TX 77062

281-300-2174 * 281-218-9750 FAX

www.EnviroSteele.com

Fancy regulatory words:

- “Structural BMPs”
- “Operational BMPs”
 - Prevent storm water impact, regardless of industry or contaminant.

*What type of
BMP would
address this?*



*WHAT'S
WRONG
(or not)
WITH THIS
PICTURE?!*

*Implementation
Issues in SPCC
& Storm Water*



Steele Environmental Services, LLC

16516 El Camino Real #101, Houston, TX 77062

281-300-2174 * 281-218-9750 FAX

www.EnviroSteele.com



NO!

- Drips into containment
- Cannot discharge

YES!



- The no-cost solution